

# climate monitoring

## Comalco - boyne smelter air monitoring

*Gladstone / Australia*

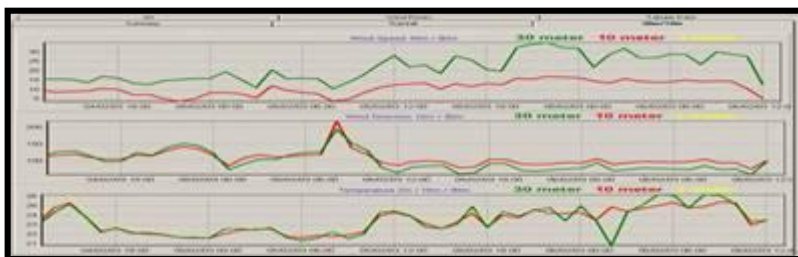
### project summary

Comalco operates a major aluminium smelter near Gladstone on the central Queensland coast. Strict environmental controls and plant operating rules require real time monitoring of ambient weather conditions. A 30 metre tilting tower was installed with an array of weather sensors to provide monitoring of air conditions adjacent to the smelter site. Data from the system is transmitted via GSM link to the control room onto graphical and tabular displays. Greenspan provided a complete project solution from system design through supply, installation, and commissioning.



### project features

- 30 meter mid hinging tilt down Mast
- Wind Speed & Direction Sensors at 10m & 30m
- Air Temperature & Humidity Sensors at 2m,10m,30m
- Barometric Pressure & Solar Radiation Sensors
- Tipping Bucket Rain Gauge
- Data Logger & GSM Data Modem Telemetry
- Control Room Graphical Data Display
- On going servicing & Annual calibration



**tyco** / Flow Control / **Environmental Systems**

