

flow and water quality

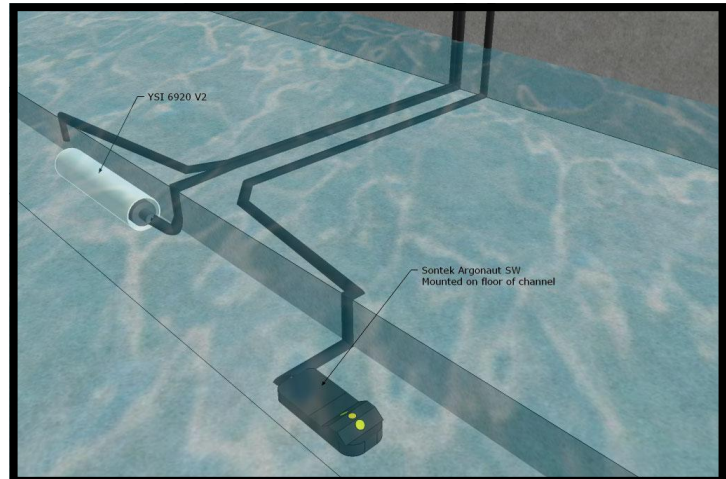
Nanyang discharge and water quality network

Singapore

project summary

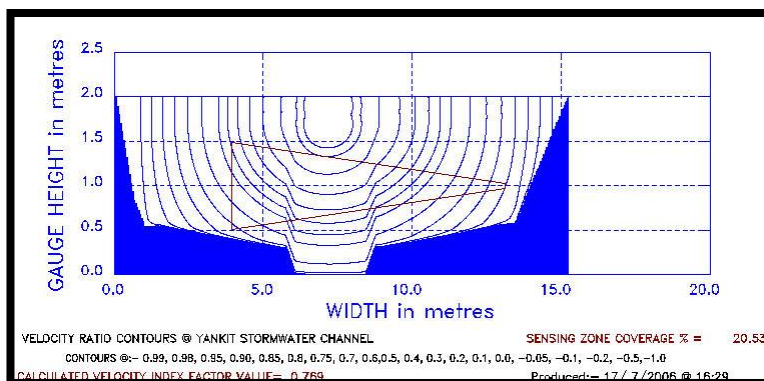
Nanyang Technological University in Singapore required an online discharge and water quality monitoring system at 21 locations in Singapore.

The network collects online level / velocity and physical water quality data as well as providing triggered sampling for later lab analysis. All data is telemetered via GSM to a base station where data is exported to XP-SMWW modeling package live and direct to the internet.



project features

- Supply, installation and commissioning of 21 flow and water quality stations
- Time and event based data collection
- Data automatically exported to XP-SMWW and Matlab modeling packages
- Data displayed on the internet
- All flow sites calibrated with acoustic Riverboat during dry and wet events



tyco / Flow Control / **Environmental Systems**

